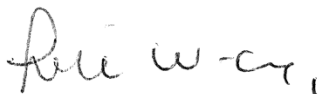


Date of issue: Tuesday, 13 November 2018

MEETING	LOCAL ACCESS FORUM
DATE AND TIME:	WEDNESDAY, 21ST NOVEMBER, 2018 AT 6.30 PM
VENUE:	ARBOUR PARK, STOKE ROAD, SLOUGH, SL2 5AY
LOCAL ACCESS FORUM SECRETARY (for all enquiries)	JACQUI WHEELER, RIGHTS OF WAY OFFICER 01753 477479

NOTICE OF MEETING

You are requested to attend the above Meeting at the time and date indicated to deal with the business set out in the following agenda.



JOSIE WRAGG
Chief Executive

AGENDA

PART 1

<u>AGENDA ITEM</u>	<u>REPORT TITLE</u>	<u>PAGE</u>	<u>TIME ALLOCATED</u>
1.	LCWIP - workshop item - Look at maps and decide what key routes/zones ought to be identified for cycling and walking – recommend to Council		(45 mins)
2.	Minutes of Last meeting on 24th May 2018 Approve Minutes as an accurate record	1 - 6	
3.	NCN Review East Berkshire	7 - 8	(10 mins)

<u>AGENDA ITEM</u>	<u>REPORT TITLE</u>	<u>PAGE</u>	<u>TIME ALLOCATED</u>
4.	Lost Ways Project - South Bucks and Slough		(10 mins)
5.	Colne Valley Park CIC Forum	9 - 18	(5 mins)
6.	BBC Berkshire Agriculture Bill Views - JK item		(10mins)
7.	Matters Arising from the last minutes		

Press and Public

You are welcome to attend this meeting which is open to the press and public, as an observer. You will however be asked to leave before the Committee considers any items in the Part II agenda. Please contact the Democratic Services Officer shown above for further details.

The Council allows the filming, recording and photographing at its meetings that are open to the public. By entering the meeting room and using the public seating area, you are consenting to being filmed and to the possible use of those images and sound recordings. Anyone proposing to film, record or take photographs of a meeting is requested to advise the Democratic Services Officer before the start of the meeting. Filming or recording must be overt and persons filming should not move around the meeting room whilst filming nor should they obstruct proceedings or the public from viewing the meeting. The use of flash photography, additional lighting or any non hand held devices, including tripods, will not be allowed unless this has been discussed with the Democratic Services Officer.

Local Access Forum – Meeting held on Thursday, 24th May, 2018 at the Meeting Room 4 - Chalvey Community Centre

Present:-

LAF Members

Arnold Richardson (Observer)
David Munkley (Chair)
Councillor Satpal S. Parmar
Andy Packer
Tony Haines

Observers

Officers, Slough Borough Council

Jacqui Wheeler
Rights of Way Officer

270. Apologies and Welcome

DM welcomed the meeting and acknowledged there are two planned meetings in 2018 due to reduced LA resources.

271. Declaration of Interest

None

272. Minutes of Last Meeting held on 14th Dec 2017

The minutes of the last meeting are approved.

273. Jubilee River External Partners Meeting

JW tabled the minutes of the JR External partners meeting held by the Environment Agency in February 2018. Updates concerned a request to have some repair work done on the paths, particularly the main cycle route through Slough. JW confirmed that works on this path are being planned for this year with the scope dependent on the amount of commuted sum remaining.

The success of the Riverside Centre was also discussed and the aspiration to have a community café on the grass area in the car park area. TH queried if the management of the car park by the EA is permanent and all agreed the car park is needed. JW agreed to check with EA. Anti-social behaviour is an on-going issue in this area, though the presence of the Riverside Centre and collaboration with Eton College are having a positive impact.

Pennywort was highlighted as an invasive species by the EA which could be reported if seen on the Jubilee River by using the App called Plant Tracker. Japanese Knotweed is not seen as such a huge problem in the waterside environment.

JW confirmed the next Jubilee River External Partners meeting would be after the Summer.

274. Better By... Sustainable Access Fund Project Update

JW referred members to the press release in the papers detailing what is being delivered across the borough by the Sustainable Access team funded by £1.5m won from the Dept. for Transport to be spent by the Council on engaging residents and visitors about active travel and sustainable modes of travel with the aim of encouraging a behaviour shift.

Cycle training and maintenance courses are being funded by the Council run by Cycle Experience.

JW explained Travel Training which is designed to combat the transport barriers both real and perceived that are often faced by those seeking employment, training and education. It will help widen travel choices by building confidence and by signposting places to find information about travel options and journey planning. There have been several sessions given already and the team are engaging with jobseekers directly at the Job Centre Plus.

The Access Fund has four different elements which seek to engage with different sections of the community; workplaces, schools, young people and jobseekers and residents across the borough.

JW stated that 6 new docks are being implemented this year and highlighted the free wheeler week whereby people who sign up for the cycle hire scheme receive a free week of hire each month.

TH commented that the walking and cycling map is not at a useful scale to be an effective tool for people looking to find a route. DM felt there still may be some people who don't have access to the internet.

Members expressed massive concern that the bus service in Slough has been decimated over recent months. TH suggested that bus stops as well as showing RTPI could also show information about how long it takes to walk to the next bus stop indicating where it is. All felt this would be an encouragement to occasional users as they could then decide whether it was worth waiting or going to the next stop. All acknowledged that there are apps available showing this information but not everyone has access to these, particularly older residents or those with learning disabilities.

Local Access Forum - 24.05.18

Members would like to see an increase in signage like this not only at bus stops but across the borough showing destinations and time taken either by walking or cycling which will greatly serve to encourage smaller journeys on foot/cycle. JW stated there was a real case for getting the information right at the point of access. The meeting questioned the aim of encouraging people to use sustainable passenger transport when services are being drastically reduced.

Resolved – The LAF is very concerned about the state of the bus service across Slough and would like to know what is being done about it.

275. Slough Canal Updates

JW tabled information about the annual Canal Clean up and highlighted the Friends of Slough Canal monthly clean up which happens on the second Sunday each month. They focus on a section of the towpath each month. TH noted that the CRT contractors Fountains are meant to be doing this job, however, there is always too much.

JW informed the group that a quote for weld mesh along the parapets of Wexham Road footbridge is being sought with ward Councillors being asked to fund. She also highlighted that the area underneath has been fenced off and gated and the rough sleepers have now gone. It is hoped that the mesh will help reduce the amount of litter being dropped or kicked from the footbridge into the canal. JW is working on getting bins and signage at the footbridge to encourage people to take their litter home.

Members agreed that it is important to make people aware that an area has been cleaned even if it's by the Council. Signs telling people how much the cleaning cost the taxpayer might help educate and discourage further littering.

JW explained the project to spray paint dog fouling along the towpath. This is being set up in partnership with the Friends of Slough Canal and a volunteer has been identified to trial the project.

It is intended that two new interpretation boards are to be produced and placed at another two locations; by the Middlegreen Road development and probably near to Trenches Bridge. Members were happy with this action and approved of the design and style.

CRT are encouraging community groups to adopt a section of the canal.

SUR regeneration of the canal basin is delayed

JW updated the meeting that the lease agreement for land at Uxbridge Road bridge has now been signed so that the Council can if needs be enter the land legitimately to clear litter and maintain.

276. LCWIP - infrastructure plan for walking and cycling

The Local Cycling and Walking Infrastructure Plan (LCWIP). This is a new plan that DfT is encouraging all Local Authorities to produce to help meet their ambition to make walking and cycling the natural choice for shorter journeys by 2040.

The LCWIP will be a tool through which LA's can build the strategic and economic business cases to access funding for walking and cycling schemes. Officers are currently working on putting together this plan and deciding that it needs to be pitched at a high enough level to attract political interest and will.

Technical assistance will be provided by the DfT and a consortium of partners, including Sustrans, Living Streets, WSP etc.

The Ramblers Charter for Walkable Towns and Cities includes the LCWIP. Members discussed the problems and issues with providing useful and safe cycling infrastructure for all the levels of cycling ability in a crowded highway environment. TH felt it would be important to include safe walking routes to get into and out of the town centre to encourage older people that it is safe and feasible to walk for shorter journeys.

277. Site Visits 2018

Dates for the summer site visits 2018 were agreed as tabled.

Locations agreed for the site visits were as follows;

- Walking routes to Burnham Beeches. Cocksherd Wood, Britwell to Burnham Beeches.
- Walking access between Langley Park/Black Park severance by the A412 Uxbridge Road.
- Old Slade Lane, Iver- cross boundary routes linking with the Colnbrook By-Pass in Slough to the south.

TH argued that the Cinder Track ought to be visited as a high profile route but others felt that less known routes needed to be checked.

278. Joint LAF Chairs Meetings

Members noted the minutes from the last Joint LAF Chairs meeting.

Local Access Forum - 24.05.18

WRLtH consultation is currently open and if the scheme goes ahead members noted that Mansion Lane would be permanently closed. The potential conflict with Heathrow expansion plans was also noted.

279. The Ramblers Charter for Walkable Towns and Cities

280. Matters Arising from minutes of the last meeting

281. Date of next meeting

TBC – preliminary date is 26th September 2018 at Arbour Park, Stoke Road.

(Note: The Meeting opened at 6.30 pm and closed at 8.30 pm)

This page is intentionally left blank

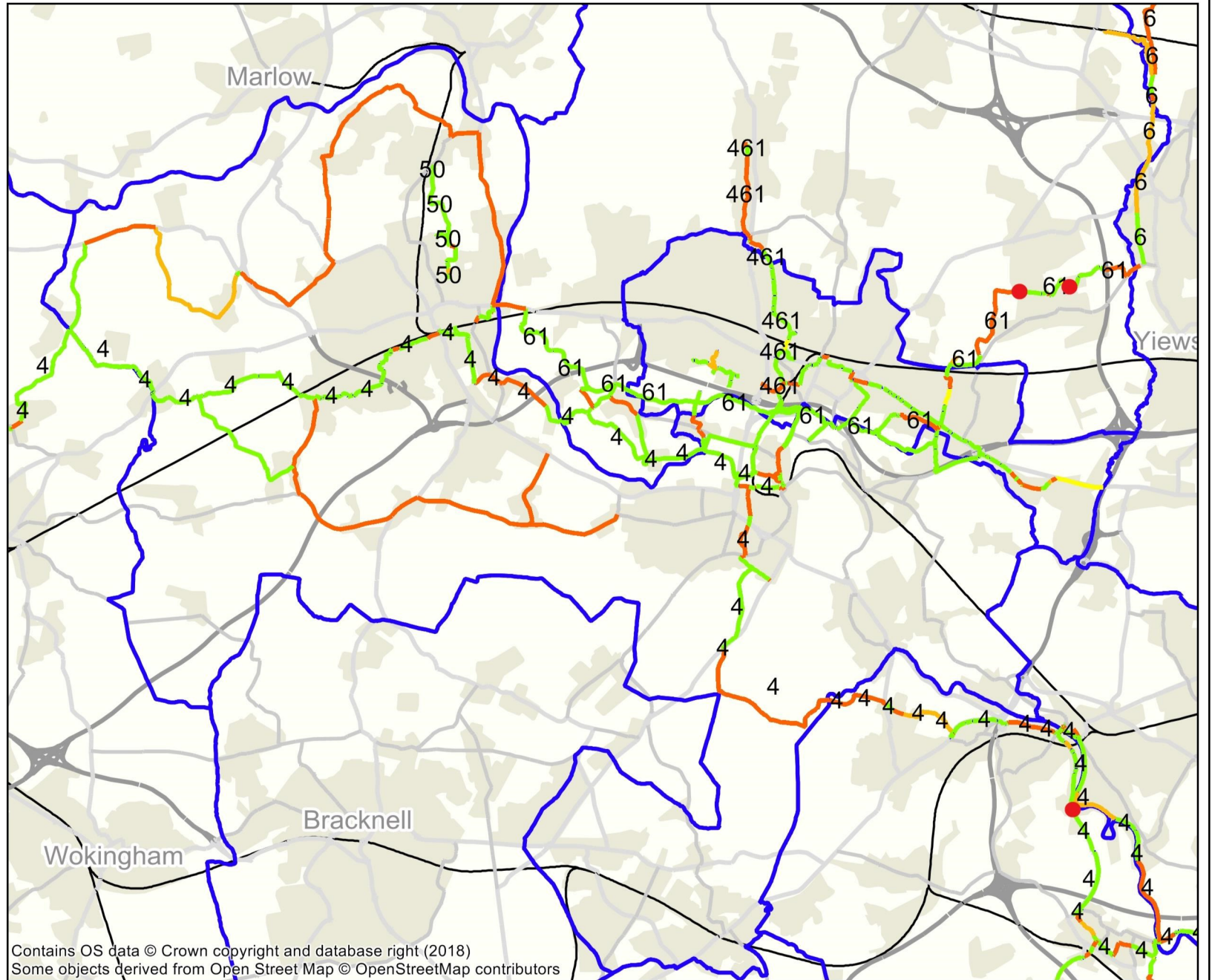
NCN Review Berkshire East

NCN Review Results

Section Scores INRIX

- Very Good
- Good
- Poor
- Very Poor

- Dangerous Crossings Overview
- District



Contains OS data © Crown copyright and database right (2018)
Some objects derived from Open Street Map © OpenStreetMap contributors



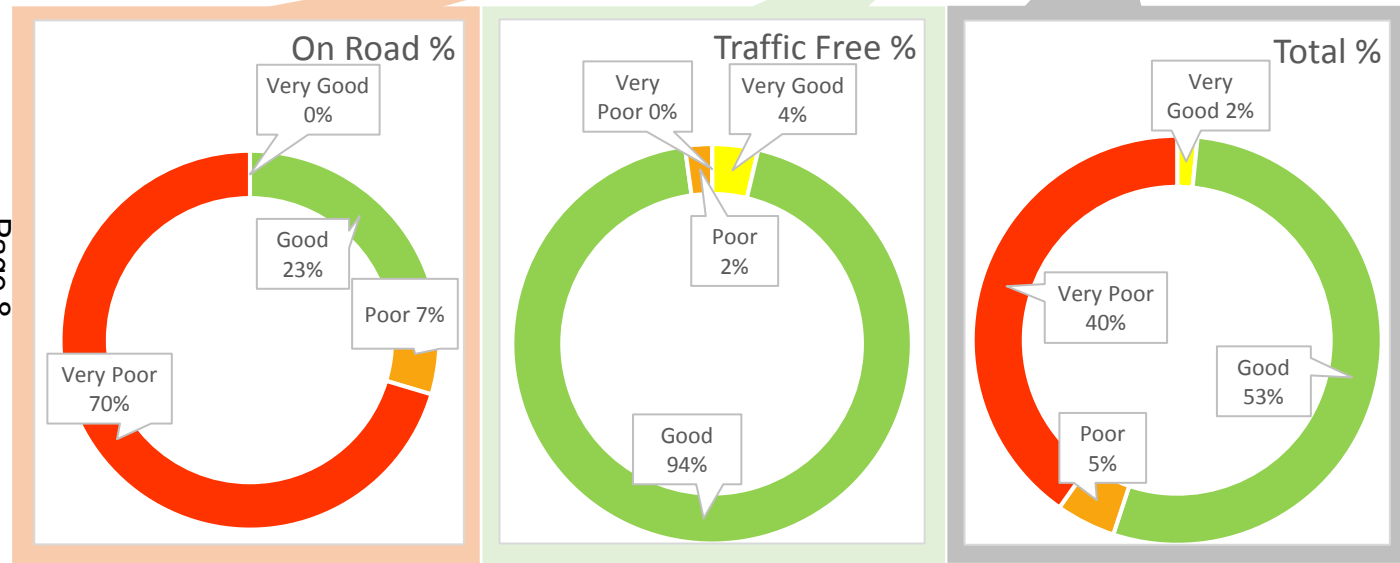
NCN Review: Top Level Reporting

Current Status [Perfect Signage](#) [Perfect Flow](#) [Perfect Surface](#) [Improvement Gap](#)

Datasheet criteria
Earthlight data: [NCN East Berks.xls](#)

Current Status - Data taken from Sustrans' route datasets

Category	On Road (mi)	Traffic Free (mi)	Total (mi)	On Road (%)	Traffic Free (%)	Total (%)
Very Good	0.0	1.1	1.1	0%	2%	2%
Good	9.0	27.7	36.7	13%	40%	53%
Poor	2.6	0.6	3.2	4%	1%	5%
Very Poor	27.6	0.0	27.6	40%	0%	40%
Total	39.3	29.4	68.7	57%	43%	100%



Dashboard Ring Charts

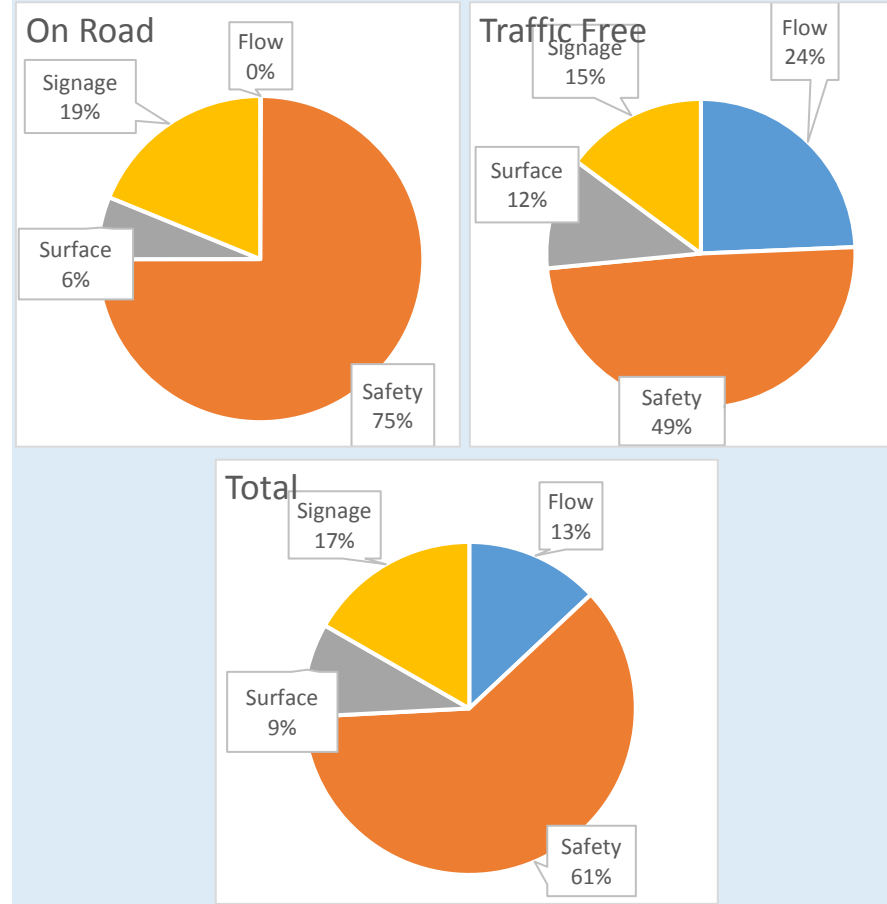
The ring charts above show the percentage of the NCN that falls into each category - Very Poor, Poor, Good, Very Good - based on scores allocated to each section by the NCN audit.

The three charts show the breakdown of categories for on-road, traffic free and the combined total for the selected area/route.

Warning

This dashboard is for display purposes so any changes you try to make may be overwritten.

Issues on the selected NCN by category



Issue Pie Charts

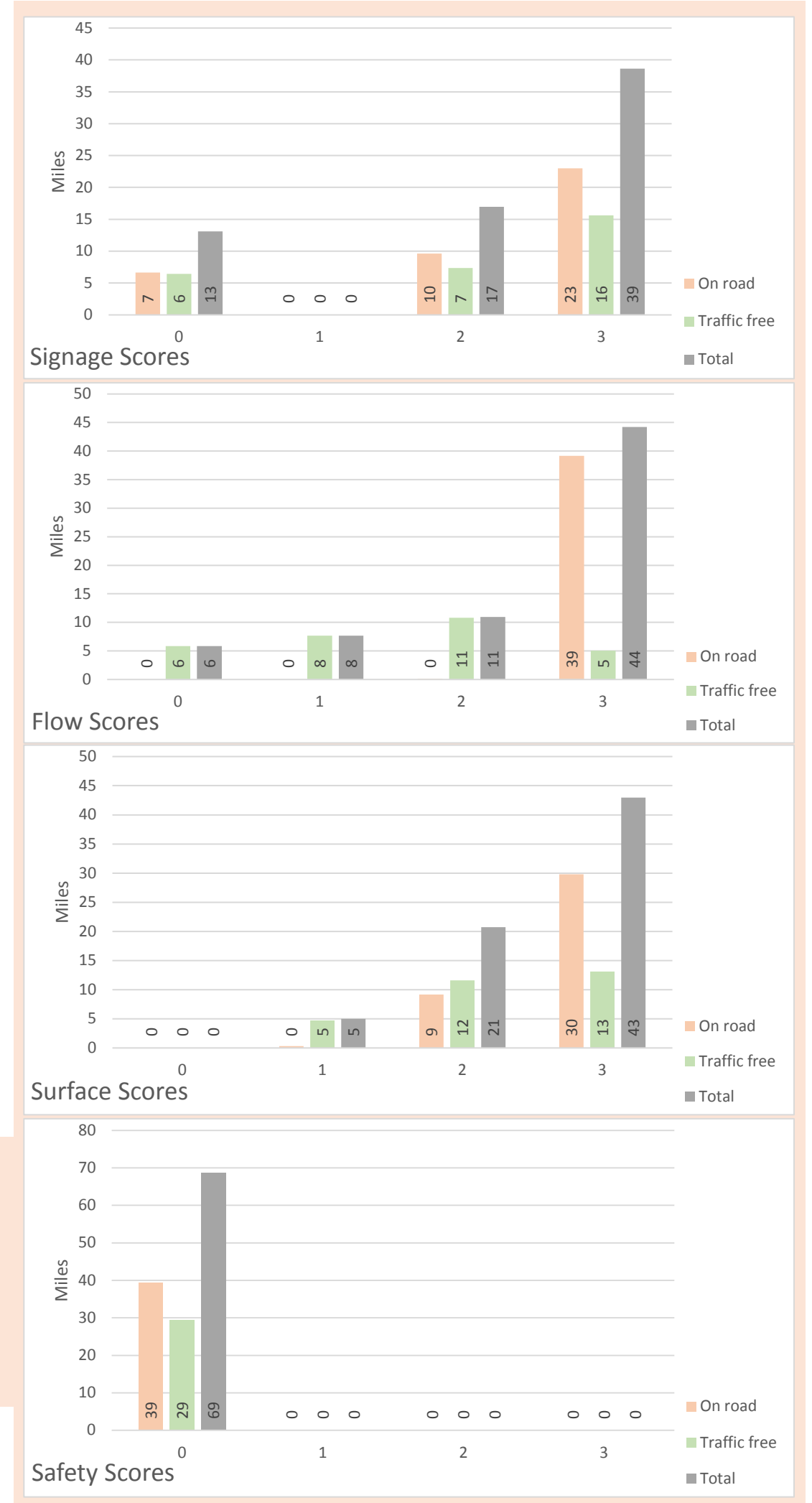
The pie charts above show the relative scale of the main issues (surface, safety, flow and signage) - the higher the percentage the more that issue impacts negatively on the score for the selected route/area.

The three charts show the breakdown of by on-road, traffic free and the combined total.

Issue Bar Charts

The bar charts to the right show the length of NCN by score (0 to 3 where 3 is best) for each service level measure.

This is broken down by on-road, traffic free and combined total.



Minutes

ARUP

Project title	Colne and Crane Spatial Vision	Job number
Meeting name and number	Colne Valley Park CIC Annual Forum	File reference
Location	The Great Barn, Harmondsworth	Time and date 4.30pm start 28 September 2018
Purpose of meeting	Introduce the 'Colne and Crane Valley Spatial Vision', followed by a workshop to gather information from stakeholders to kick-start the process.	
Additional Notes	Some groups noted that there was not enough time to complete task one and requested for the 1988 spatial vision plan to be circulated digitally for them to comment further. Please feel free to send any additional information through to Angela Hird at Arup – angela.hird@arup.com	
Circulation	<i>Those present</i>	

Summary Notes of the Workshop by Arup

Task One: The 1988 Spatial Plan 30 years on (5mins)

- **Which of the projects have been completed/ Are any outstanding projects still relevant?**

[See attached map for a summary of all the responses, including responses received post-workshop.]

Task Two: Opportunities - Applying the 6 objectives to the Park (15 mins)

- **Which areas should potential enhancement projects be focussed upon based on the six objectives?**

Objective 1: To maintain and enhance the landscape, historic environment and waterscape of the park in terms of their scenic and conservation value and their overall amenity

- Linked green spaces being able to get from one to another (good for wildlife too).
- A continuity of countryside infrastructure throughout the RP. [Requires management].
- There should be an aim to restore and maintain the River Colne and tributaries throughout as they are chalk rivers and one of only 200 in the world. Water voles can be used as an indicator of health; if its good enough for water voles its good enough for other wildlife.

Prepared by Angela Hird
Date of circulation 12th October 2018

Minutes

Project title

Job number

Date of Meeting

Colne and Crane Spatial Vision

28 September 2018

- Effort needs to be made into ensuring that clean water is secured for the Colne Valley; effort needs to be made into getting this message across to the population. Case studies should be used to identify how rivers can be restored when variety is 'wiped out' by pollution.

Historic Environment

- Heritage sites- Identify and link with landscape
- Preserving the character of the special villages e.g. Harmondsworth, Harefield etc
- Restore historic bridges

Water Bodies

- Wraysbury Reservoirs and the way they are managed
- Wraysbury lake network – Develop a unified management plan. Linking up and maximising statutory designations.
- Underground works – Impacting on groundwater.
- The Colne Valley is what it is because of the river. That is where the focus of protection and enhancement needs to be.
- River Misbourne - Chalfont St Giles – downstream stopped flowing for last 18 months.
- Access to River Misbourne and restoration of.
- Opportunities for new developments along the corridor to tie into blue infrastructure network and a key need for them to do so. How far can the vision go into setting these principles?
- A key site is Waterloo Wharf – Involvement of Taylor Wimpey and Paul Stimson (Head of Planning Department for Slough).
- Any water – be that water bodies, watercourses, the canal – to be celebrated.
- Rivers – catchments outside (e.g. Watford urbanised area) have a major impact.

Objective 2: To safeguard the countryside of the Park from inappropriate development. Where development is permissible it will encourage the highest possible standards of design.

- Land south of the M4 still highly relevant.
- Need to lobby in favour of the Aylesbury Garden Town to reduce housing pressures in South Bucks.
- Areas threatened by HS2 and Heathrow Expansion. Maximum efforts on mitigation.
- Green belt to prevent urban sprawl.
- Ensuring valued assets aren't lost to infrastructure, which affects nature and people but also breaches trust of locals which become attached.
- Fly tipping generally – need to design and manage out.
- Ash corridor and inclusion of in CVRP area.
- A continuity of countryside infrastructure throughout the RP; (ensure management).

Minutes

Project title

Job number

Date of Meeting

Colne and Crane Spatial Vision

28 September 2018

Objective 3: To conserve and enhance biodiversity within the Park through the protection and management of its species, habitats and geological features

- Enhancements to Harmondsworth Moor, waterside walks, recreation, rivers, wildlife.
- Ruislip Woods-Bughurst Woods: concern because HS2 opportunity to increase woodland or green chain walk
- Identify private land with public access to work with, land managers to improve habitat and access e.g. Thames Water land, Affinity Water land, Bretts Aggregates land, Arthur Jacobs nature reserve – improve access to the river.
- Stockers and Springwell lakes (Rickmansworth lake network) connecting to the mid Colne Lakes creating wildlife corridors.
- Opportunity for wildflower corridors on a huge scale – beneficial for butterflies etc. – potentially start at Denham.
- Any areas lost e.g. Harmondsworth Moor, should be compensated for elsewhere with at least at equal level of quality. No short cuts should be taken in terms of securing quality habitat. Areas set aside as part of mitigation should not later be threatened by future development.
- It needs to be the case that the landscape and wildlife inherited is in a better state than it is now. There are designated sites for nature conservation. Any visionary statement needs an evidence base and that is something we haven't got; keen to get an audit of 'where we are now' and identify the good and bad bits.

Objective 4: To provide opportunities for countryside recreation and ensure that facilities are accessible to all

- Footpath from Denham Station to Colne Valley park centre.
- Footpaths and cycleways to get more cars off the roads.
- Create continuous access links for bikers and walkers.
- Quarry: Denham roundabout - will be home to Hillingdon Outdoor centre: Integrate with rest of CVRP and improve habitat, aesthetics and access.
- Colne Valley is the first taste of countryside outside west London – a focus was felt to be enhancing the quality and usability of circular walking/ recreational routes e.g. at the River Colne at Cowley, near Uxbridge industrial estate.
- Ramblers group see the lakes as the key opportunity area as people love the experience of the water.
- Effort needs to be placed into making the area accessible to local people; we should make sure that they can access the countryside e.g. no need to go over a bridge.

Grand Union Canal

- Grand Union canal – conflict of users – need widening.
- Extra Chemical Toilet emptying facility along Grand Union Canal.

Minutes

Project title

Job number

Date of Meeting

Colne and Crane Spatial Vision

28 September 2018

- Grand Union Canal Towpath widening for Anglers and cyclists.
- Three Rivers Canal Towpath - lots of work needed.
- Enhancement and protection of Grand Union Canal. It is one and same as River Colne in places. Under threat of pollution (Bank and Water) from floating boats.
- Grand Union Canal: a key opportunity as multi-use recreation opportunities.

Objective 5: To achieve a vibrant and sustainable rural economy, including farming and forestry, underpinning the value of the countryside

- Woodland regeneration and management a key issue in many parts of the CV. E.g. lack of woodland management and lack of succession planting and associated potential for future change to landscape character.

Objective 6: To encourage community participation including volunteering and environmental education. To promote the health and social well-being benefits that access to high quality green space brings

- Explore opportunities for greater publicity/awareness raising/outreach initiatives for projects/programming. Libraries for leafletting as well as online presence.
- It is important to emphasise localism and community engagement. There is need for people to know about the Colne Valley and how they should be educated about the Park/ivers to encourage 'ownership' of the area.
- A2 (Newlands): Neighbourhood Plan written by local people.

Other

Management:

- Management, maintenance and revenue are key issues – without sorting these out projects are compromised. So, key to identify funding/governance streams. Set this message out in the vision. (Idea of the vision as a roadmap and to refer to as major development and infrastructure projects come forward.)
- The CVRP really needs to be properly funded and managed. Gerry Unsworth's point regarding planning for the RP and Lord Randall's re. funding.
- It's okay carrying out enhancements but there has to be the funding to manage them in perpetuity.

Major infrastructure projects:

- Key focus needs to be major infrastructure developments e.g. Heathrow, HS2 and to think about GI design principles.
- Also, consideration of proposed North – South network rail link at Iver (check status).
- Heathrow airport was mentioned - its visitors first impression of the UK/England. In response - further tree planting along all major roads and motorways.

Minutes

Project title

Job number

Date of Meeting

Colne and Crane Spatial Vision

28 September 2018

Next 50 years:

- Want to still see the park as a unified area on the map.

Approach to Vision:

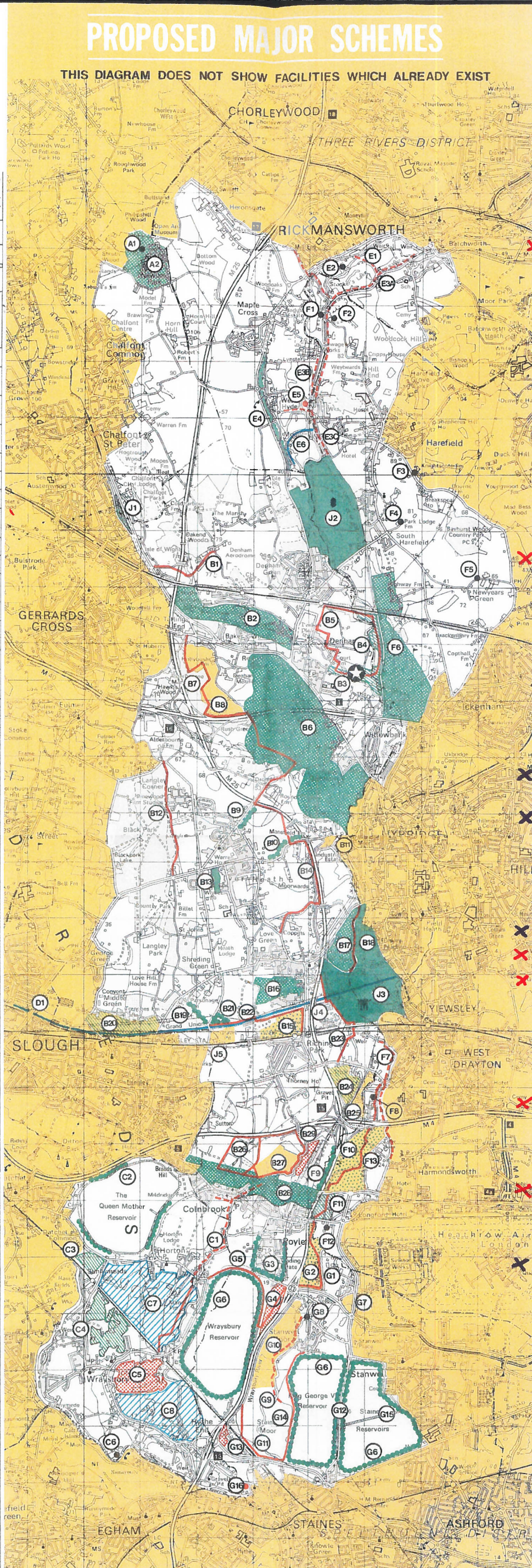
- The move to highlight 'good bits' is a bad one as it implies that the rest of the area is 'not good', so leaving it vulnerable to development, neglect etc. Slough Borough Council has policies that project 'the Colne Valley', and that is enough; areas should not be distinguished; the Royal Borough of Windsor & Maidenhead does not even reference the Colne Valley in its local plan.
- It is worrying that a 30 year old vision will have had projects which were never accomplished; does more need to be done to encourage the organisations involved in 'making things happen'; better steps taken now to ensure action.
- Any new developments should have really well-planned landscape and the funding to manage them into a central pot.
- Hillingdon Ramblers Association – suggested that this vision is an opportunity to 're visit' projects and improve on existing ones implemented.

• **Which area/assets are most valued or special and why?**

- Staines Moor: Wildlife and history value.
- Ancient commons of Spelthorne e.g. short wood and birch green
- Bayhurst Wood ancient woodland
- Fray Farm meadow/Denham Lock Wood SSSI's
- Valleys around Harefield
- BPCP, LPCP, DCP, Little Britain, Rickmansworth Aquadrome.
- Any gravel extracted areas should be restored for wildlife/recreation with funding to manage it.
- Alder glade nature reserve (Frays)
- All areas of water- canals, rivers, lakes – need additional protection.
- Villages – small scale, integrity.
- Groundwater quality, rivers.
- Country Parks – but they get very busy – need more CPs e.g. near Heathrow?
- Langley Park
- Old Orchard – view of Colne Valley.
- Barn at Harmondsworth – one of the Colne Valley's hidden jewels.
- Stockers Lake – for biodiversity.
- Little Britain Lake.

PROPOSED MAJOR SCHEMES

THIS DIAGRAM DOES NOT SHOW FACILITIES WHICH ALREADY EXIST



- ▲ Lead Agency to initiate and to arrange funding, contract, management and maintenance
- △ Other Agencies to be involved
- J Schemes beginning with J are joint schemes which cross local authority boundaries
- 3 Completion Dates 1993
- 8 1998

A CHILTERN DISTRICT COUNCIL AND BUCKS COUNTY COUNCIL

Completion Date	Statutory Undertaker	Private Enterprise	District Council	County Council
1	▲			
2	▲			
J1	▲	△		

B SOUTH BUCKS DISTRICT COUNCIL AND BUCKS COUNTY COUNCIL

Completion Date	Statutory Undertaker	Private Enterprise	District Council	County Council
1	▲			
2	▲	△	△	△
3	▲			
4	▲			
5	▲			
6	▲			
7	△	▲		
8	△	▲		
9	▲			
10	▲	△	△	△
11	△	▲		
12	▲			
13	△			
14	▲	△	△	△
15	▲			
16	▲	△	△	△
17	▲			
18	▲			
19	▲	△	△	△
20	▲			
21	▲	▲		
22	▲	△	△	△
23	▲	△	△	△
24	▲			
25	△	▲		
26	▲	△	△	△
27	△	△	▲	
28	▲	△	△	△
29	△	▲		
J1	▲	△	△	△
J2	△	△	△	8+
J3	△	△	△	8+
J4	▲	△	△	3
J5	▲	△	△	3

C ROYAL BOROUGH OF WINDSOR AND MAIDENHEAD AND ROYAL COUNTY OF BERKSHIRE

Completion Date	Statutory Undertaker	Private Enterprise	Borough Council	County Council
1	▲	△	△	3
2	△	▲		3
3	△	▲		3
4	▲			3
5	▲			3
6	▲			3
7				
8				

Joint options study to be pursued between Berkshire County Council and Private Enterprise on possible future uses.
not followed through

D BOROUGH OF SLOUGH AND ROYAL COUNTY OF BERKSHIRE

Completion Date	Statutory Undertaker	Private Enterprise	Borough Council	County Council
1	▲	△	△	8
J4	△	△	△	3
J5	△			3

E THREE RIVERS DISTRICT COUNCIL

Completion Date	Statutory Undertaker	Private Enterprise	District Council
1	△		
2	△	▲	
3A	△	△	▲
3B	△	△	▲
3C	△	△	▲
4	▲	△	△
5	△	▲	△
6	△	▲	△

F HILLINGDON BOROUGH COUNCIL

Completion Date	Statutory Undertaker	Private Enterprise	Borough Council
1	▲	△	△
2	△	▲	
3	▲		
4	▲		
5	▲		
6	▲	△	
7	▲	△	△
8	▲		
9	△	▲	△
10	▲	△	
11	▲	△	
12	▲		
13	▲		
J2	▲	△	
J3	▲	△	△
J4	▲	△	△

G SPELTHORNE BOROUGH COUNCIL AND SURREY COUNTY COUNCIL

Completion Date	Statutory Undertaker	Private Enterprise	Borough Council	County Council
1	▲	△		
2	▲	△		
3	▲	△	△	
4	▲			△
5	△	▲	△	△
6	▲	▲	△	△
7	▲			△
8	△	▲	△	△
9	▲	△	△	△
10	△	▲		
11	△	△	△	△
12	△	△		
13	▲	△		
14	△	▲	△	
15	△	▲	△	△
16	△	▲	△	3

KEY

- ★ Park centre
- Country Park
- Nature Park
- Recreation
- Landscaping
- Tree planting
- Restoration to agriculture/agricultural improvements
- Restoration to recreation
- Restoration to agriculture/recreation
- Picnic sites
- Bridleways
- Towpaths/footpaths
- Canalside improvements
- Nature reserves
- Public open space
- Areas to be subject to joint option studies

Scale 1:50,000

0 1km 1mile

KEY

- ✓ DONE
- PARTIALLY DONE
- ✗ DONE, NEEDS RE DOING / PRIORITY
- ✗ NOT DONE

In addition to the schemes shown, minor works would be carried out such as tree planting around the edges of the urban areas and villages. Opportunities and other proposals will no doubt come forward from time to time from both the public and private sectors, and they will be evaluated against the strategy and objectives of this forward sheet. Many minor works would be carried out by the Colne Valley Park Groundwork Trust Ltd. The maps are reproduced with permission of Ordnance Survey and the proposals shown do not prejudice decisions on planning applications.

**Colne Valley Park CIC Annual Forum 2018
at The Great Barn, Harmondsworth,
Friday 28th September 2018.**



MINUTES

Welcome & Introduction

John Whitby, Chairman of the Colne Valley Park Community Interest Company

JW welcomed people to the Forum and thanked them for coming. He explained why he is involved with the CVP: he has farmed in the Colne Valley his whole life, and is passionate about the local countryside. The Colne Valley Park Community Interest Company acts as a 'champion' for the Regional Park, which lies on the edge of Herts, Bucks, Berks, London and Surrey. Our work is guided by the six objectives of the Park:

- To safeguard the countryside
- To maintain and enhance the landscape
- To conserve and enhance biodiversity
- To provide opportunities for countryside recreation
- To achieve a vibrant and sustainable rural economy
- To encourage community participation

Thanks to English Heritage and the Friends of the Great Barn for allowing us to use this wonderful building.

Justine Bayley from the Friends of the Great Barn explained this remarkable building is one of only a handful of its type in the country. English Heritage purchased the barn in 2011, as it was not being maintained. It is Grade I listed, and is significant on account of its age (it dates back to 1426, a fact confirmed by tree-ring dating of its timbers), rarity, size and association with Winchester College. Medieval documents show how the barn was built and used. It influenced gothic-revival buildings. The barn also has 'group value' on account of its association with the church and village. Archaeological finds in the area date to around the 6th Century.

Guest Speaker, Lord Randall

Lord Randall explained that he had been MP for Uxbridge for 18 years, stepping down in 2015. He then became a Director of the Colne Valley Park CIC, but had to relinquish his post when he was appointed special adviser on the environment to the Prime Minister. He said that a look at his voting record will confirm how much importance he places on the Colne Valley.

It was great being in the Great Barn, as he believes it sums up what the Colne Valley is about – a landscape made up of hidden jewels. A lot of people pass by such places without realising they are there. It is still the case that few tourists come to the Colne Valley, but local people can appreciate the wildlife, lakes and ancient woodland here.

Lord Randall said he has a great interest in wildlife, especially birdwatching, and he is especially fond of the green areas around West Drayton, Uxbridge and Stockers Lake. Little Britain is a regular haunt, the ideal environment for thinking things through. The proximity of these places to London, makes them 'pretty special'. When Lord Randall became a Director of the Colne Valley Park, he quickly realised there was so much more to the area. As part of his induction he visited John Whitby's farm and was impressed at the extent to which farming is being carried out; lots of people still don't think of the area like that.

Lord Randall praised the CVPCIC Board for doing a great job. The Colne Valley is under constant and mounting pressure, not least from housing and large infrastructure projects. Proposed expansion of Heathrow and HS2 are two of the biggest threats. He said this is why we need people to keep an eye on the Colne Valley and to keep up the hard work. Having been an MP, he knows it is not enough to say: 'I don't want...', 'I don't like...' – there is a need for hard facts and good reasons for objecting to plans that threaten our precious landscape. A lot is going on in terms of responses by the CVPCIC. There is also a need to consider how to deal with developments should they go ahead, in order to ensure the maximum mitigation measures can be achieved.

The Regional Park is there to be loved and used. Walking, angling and cycling are just some of the activities that can be enjoyed, but unfortunately not enough people know about it. One of the key problems is that the Regional Park straddles a number of Boroughs and Districts, and that this can cause confusion. No one authority can 'keep an eye on it'; Lord Randall would like to see an overall planning authority covering the Regional Park, as is the case for National Parks. 'Badging up' the area is fine, but it is difficult to convey the full extent of the area to people. There is need to get funding for the Regional Park instead of funding going from local authorities to the Lee Valley.

The health benefits of getting into green spaces is clear, so it is necessary to maintain the area and encourage sustainable use. Lord Randall urged those attending the Forum to take account of the suggestions listed on the back of the Colne Valley business card: explore the park; 'like' it on Facebook; follow @Colne_Valley on Twitter to keep up with news and developments; become a member of the Friends of the CVP and spread the word. He emphasised the need for everyone to act as individuals, as the Park is 'our special place'.

Major planning proposals and mitigation. Jerry Unsworth, Planning Consultant for the Colne Valley Park CIC

The CVRP is sandwiched between two of the biggest proposed civil engineering projects in Europe (HS2 and Heathrow), plus many other developments. We will always fiercely oppose developments that conflict with the six objectives of the Park.

We take a pragmatic approach, whilst making our opposition clear. This means seeking to mitigate the impact of local authority- or government-approved developments on the Park's objectives. Position statements on HS2, Heathrow expansion and rail access to Heathrow can be found on the CVP website.

CVRP is a member of the Heathrow Strategic Planning Group – the only member not a Local Planning Authority or Local Enterprise Partnership. We act as champion for Green & Blue Infrastructure, and chair the environmental sub group.

If it goes ahead, Heathrow expansion will fundamentally change the southern third of the Park. The CVRP has identified three key issues – as follows, our requested solutions are written in italics:

- Permanent loss of parts of the Colne Valley Regional Park. *We are seeking mitigation that will reduce the scale of any loss, and seeing that loss is replaced elsewhere*
- Loss of the Park's Functionality. *We are seeking mitigation through a landscape-scale vision, and by taking a multi-functional approach to mitigation and long-term management*
- Impact on rivers and loss of connectivity from Thames to Chilterns. *We are seeking mitigation on a catchment scale, addressing habitat connectivity*

Our responses to other planning consultations over the last year have included Western Rail Link to Heathrow; the Mayor of London's transport and environment strategies; Slough and Spelthorne Council's Local Plan issues and options; Chiltern and South Bucks register of Brown Field sites. We respond to many other site specific planning applications where resources allow.

£2.5M Colne Valley Landscape Partnership. Stewart Pomeroy, Groundwork South

'Colne Valley: A Landscape on the Edge' is a new initiative that features an ambitious range of 19 projects. They include measures to conserve wildlife habitats, raise awareness among local people of the Park and the need to reduce water consumption, improve access routes into the area, support local conservation groups, and encourage residents and visitors to celebrate their landscape by getting out and about in it.

The success in securing £2.5m to fund this over the next three years is the result of many years' work dating back beyond 2013. The research and development has helped us in many ways – e.g. the production of a Colne Valley Landscape Character Assessment (LCA) in 2017 which tied together many older LCAs produced by councils, and it filled in the gaps where councils have not produced an LCA.

Monitoring and evaluation, and planning for legacy (to ensure the funding secured can have a lasting impact), are vital to this project.

More information can be seen in the 'Landscape Conservation Action Plan' at www.colnevalleypark.org.uk/projects/colne-valley-landscape-partnership-scheme

Questions on the above three, presentations

Q Protecting land is important, but how can we improve derelict land where landowners are allowing things to degrade?

JU: Local authorities have the power to do something about it: Section 215 notices can deal with untidy land, and there are opportunities to undertake enforcement action. All this has resource implications. People want certainty on the future of land; the sooner areas are resolved, the better. The question is, how will the areas be managed in the future; this is down to funding and landowner agreements.

Lord Randall: The Government is trying to bring in greater control on large-scale flytipping. Scrub etc. can be a valuable biodiversity resource. He remembers there being proposals to extend a garden centre in Uxbridge (Green Belt); this was unsuccessful. The land was abandoned and now it is of greater value for biodiversity than it was before.

Q. How are we going to get better at getting the message across to people about the value of the Regional Park? It is a challenge getting people engaged.

SP: The awareness of the Park is higher than it was 5 years ago but agreed that it is nowhere near where it could/should be. Lack of funds has been a key factor in this. With the Landscape Partnership, funding will be spent on interpretation & events, a new website and better use of social media, newsletters will be more widely distributed, Evaluation Consultant may help provide ideas on improvement. All of us have a role in getting the message out there.

Lord Randall: The lack of local newspapers does not help. The CVPCIC has recruited a new Director who has worked in media and this has been a real bonus. Encourage people to follow the CVP on Twitter; it is a good way to keep updated threats and

opportunities. Need to emphasise when particular sites are part of the Colne Valley e.g. volunteers at the Old Orchard pub to raise awareness that the beautiful view is part of the Colne Valley.

Paul Graham asked that each audience member task themselves to recruit an additional member of the Friends of the Colne Valley Park by the next Forum.

Q. How can decisions be made about whether one objective of the Regional Park is more important than another? Some farmland was used for tree planting as part of HS2 mitigation.

SP: The CVPCIC petitioned against HS2 planting trees on this farmland. Unfortunately this was ignored

JU: The strength is that equal weight is given to all objectives – it's not a case of 'either, or'. The scale of impact on the landscape is so significant that a comprehensive approach is needed. There is a need to approach mitigation for major developments in an integrated manner – it is too easy for the area around the airport to be grubby. Land should be managed in line with the Park's six objectives. The CVPCIC aims to get the right solution for the Green Belt in the area.

Lord Randall: Nature can heal itself if given a chance. It is possible to improve on what exists now.

Colne Valley Spatial Vision. Arup & Mike Woods, Director of the Colne Valley Park

One of the Landscape Partnership projects is to produce shared vision for the next 50 years that can shape projects and fundraising, and inform mitigation from developments directly affecting the Park. Arup has been commissioned to do this work over the next nine months.

This is an opportunity to bring together existing and new information, projects and initiatives to produce one unified, compelling spatial vision. This can then be used as a master document for future project delivery (a five-year and 50-year look ahead), as well as forming an evidence base for Local Authority plans.

Members of the Arup team then set out some questions to help kick start the information gathering process. The results of these discussions have been written up by Arup and are distributed along with these minutes.

Round-up and Close – John Whitby

JW thanked the Forum delegates for their attendance and input. He added it was good to see such a wide range of organisations represented: 70 organisations have joined as members of the Colne Valley Park CIC, and we greatly value this support. If your organisation has not yet joined, please speak to the CIC directors or Stewart Pomeroy from Groundwork